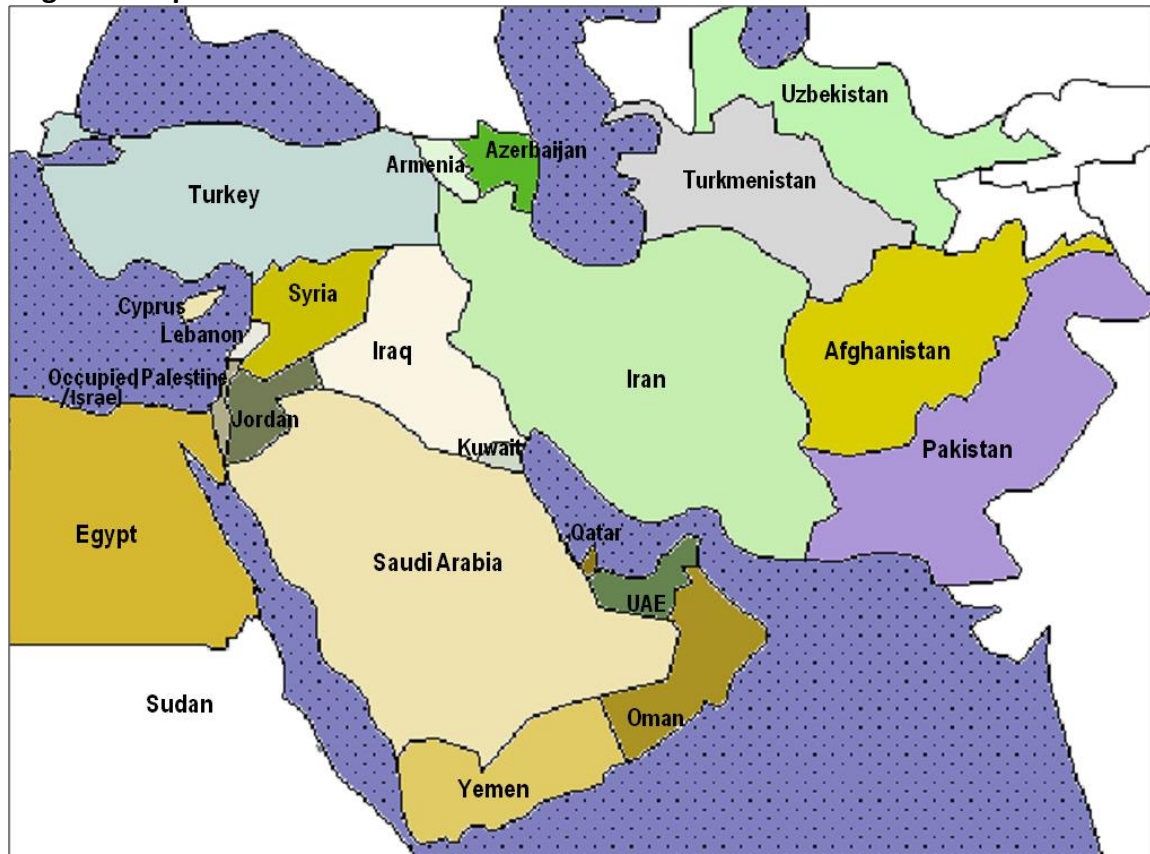


## Maps

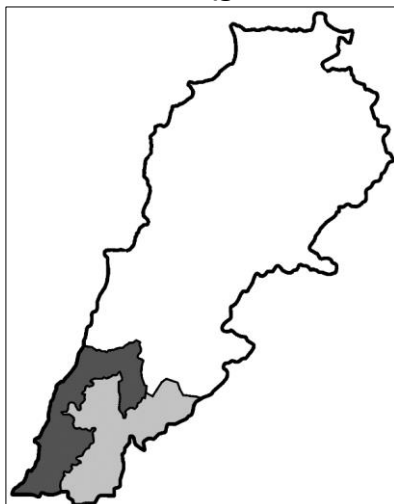
The following maps are approximate representations and are not drawn to scale.

- [Regional map](#)
- [South Lebanon \(governorate and region\)](#)
- [South Lebanon and significant towns](#)
- [The Litani River and significant towns](#)
- [Invasion and Occupation zones](#)

### Regional map:



### South Lebanon (governorate and region):



Areas shaded in both dark and light grey approximate “Southern Lebanon,” “the South” or “al Janoub.” The region comprises two administrative districts: the “South Lebanon Governorate” (dark grey) and the “Nabatiye Governorate” (light grey).

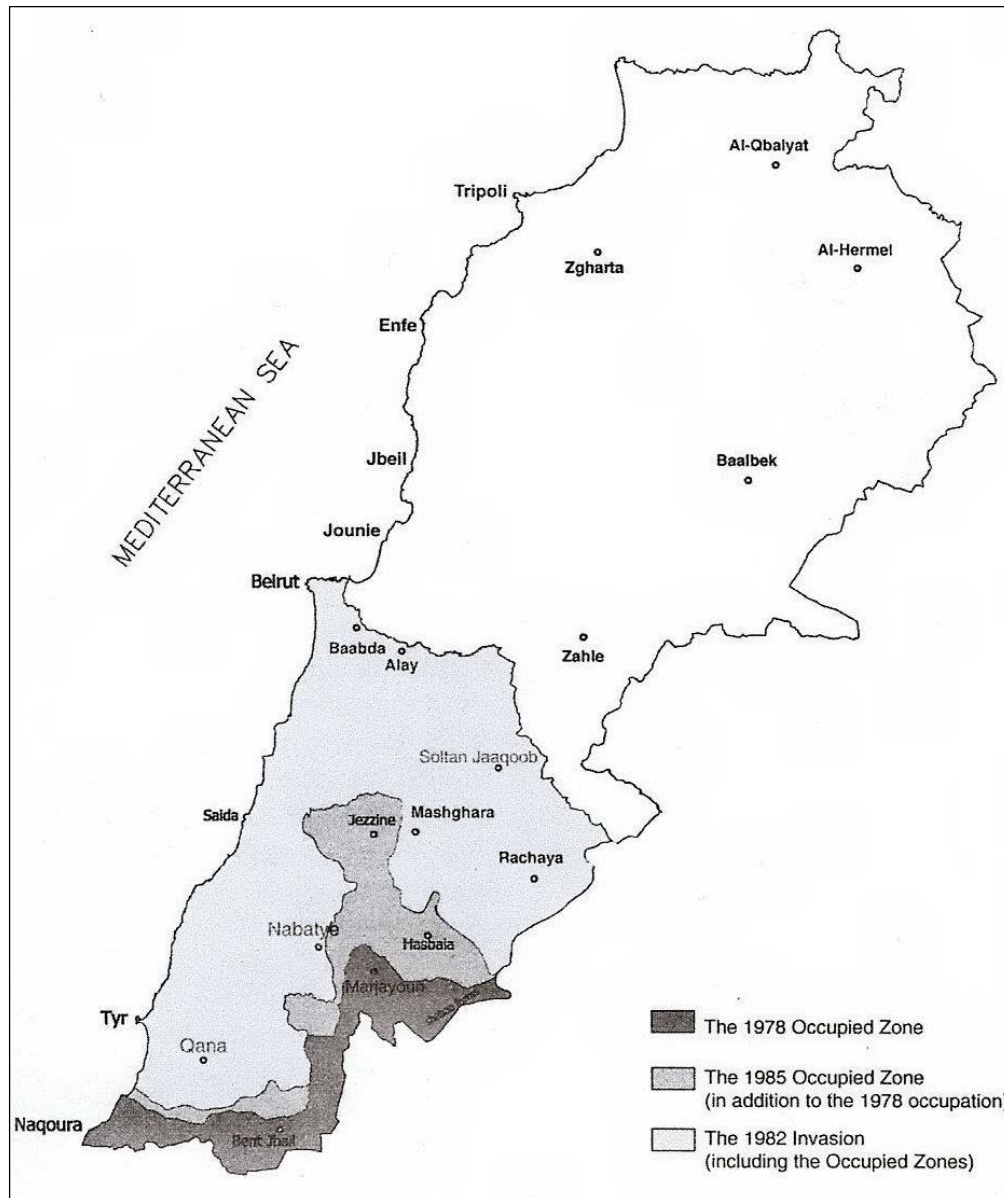
**South Lebanon and significant towns:**



**The Litani River and significant towns:**



## Invasion and Occupation zones:



[Google Maps of Lebanon](#)